



International Journal of Traditional and Complementary Medicine  
(ISSN:2474-1361)



## Regulatory Medicine In The Treatment Of Food Allergy In Dog A Case Report

**Alena Micháľová DVM, Martina Takáčová DVM, Martina Karasová DVM, Assoc. Prof. Mária Fialkovičová DVM PhD.**

Department of Internal Diseases, Small Animal Clinic, University of Veterinary Medicine and Pharmacy in Kosice, Slovakia

### ABSTRACT

Food allergy is defined as a pruritic dermatitis which is indicated by allergic reactions to food components. Due to its excessive incidence of clinical signs it is necessary to determine the correct diagnosis, provide sufficient control and long term management to achieve comfortable way of life for an animal. In case of very intensive pruritus there are usually used in common medicine glucocorticoids, antihistaminics and inhibitors of Janus kinase but there are also other alternatives such as bioresonance, homeopathy, phytotherapy, acupuncture, etc. that have also very beneficial and curative effect in case of food allergy. Diagnostics and therapy by bioresonance are alternative methods used in modern medicine that was discovered as a combination of quantum physics and Traditional Chinese Medicine. We can use it for various types of acute and chronic diseases without any invasive intervention into the body. There have been positive results in the diagnosis and treatment of allergies in dogs, which are nowadays constantly increased, and that have been one of the most common causes of dermatological and gastrointestinal diseases.

**Keywords:** Food Allergy, Pruritus, Regulatory Medicine, Bioresonance, Homeopathy

### \*Correspondence to Author:

Alena Micháľová

Department of Internal Diseases,  
Small Animal Clinic, University of  
Veterinary Medicine and Pharmacy  
in Košice, Slovakia

### How to cite this article:

Alena Micháľová, Martina Takáčová, Martina Karasová, Mária Fialkovičová. Regulatory Medicine In The Treatment Of Food Allergy In Dog A Case Report. International Journal of Traditional and Complementary Medicine 2020, 5:25.

 eSciPub  
eSciPub LLC, Houston, TX USA.  
Website: <https://escipub.com/>

## INTRODUCTION

Food allergies in dogs are constantly increasing. They are one of the most common causes of dermatological, and gastrointestinal problems in small animal practice (Steiner, 2008). Food allergy is defined as a malfunction of the immune system that causes reaction against allergens of the food components (Mueller and Jackson, 2003). During this allergic reaction, the immune system, produces antibody called immunoglobulin E (IgE) that binds to the surface of mast cells. If the exposition between the equal antigen and animal is repeated, antigen binds to antibody that cause degranulation of mast cells and following release of inflammatory mediators causing inflammation. This “early” type I of hypersensitive reaction is formed only few minutes or hours after an exposure of the body to an antigen. Food antigen hypersensitivity can gradually lead to other diseases such as inflammatory bowel disease, etc. (Steiner, 2008). Clinical symptoms occur after antigen penetration through intestinal wall and after its encounter with sensitized basophils or IgE bound to mast cells in the skin (Mueller et al., 2018; Steiner, 2008). Food allergy symptoms can include:

1. Non-seasonal pruritus (ears, feet, inguinal parts, axillae, face, neck, perineum),
2. Efflorescence (erythema, papules, alopecia, crusts, hyperpigmentation),
3. Secondary bacterial infections,
4. Malassezia dermatitis,
5. Otitis externa (Mueller et al., 2018; Steiner 2008).
6. Gastrointestinal symptoms (Picco et al., 2008).

Due to extensive incidence of clinical signs it is very important to make a correct diagnosis for elimination of an offending allergen from the body and provide long term management to achieve comfortable way of life of animal (Luckschander et al., 2006; Rostaher et al. 2017).

## METHODOLOGY

### 1. Bioresonance- regulatory diagnostic and therapeutic method

Bioresonance is a biophysical diagnostic and therapeutic method, that belongs to regulatory medicine and is becoming increasingly popular therapeutic method in human and veterinary medicine. The advantage of this method is the non-invasive intervention to the organism, which, through quantum physics (QP) and the principles of Traditional Chinese Medicine (TCM), ensures a deep effect on the biological regulatory systems of the organism. Although the body has a phenomenal regulatory system, it is currently exposed to many negative factors, such as molds, allergens, stress, etc., and its regulatory ability may be slowed down, or even blocked. The main principle of this technique is communication between cells on the principle of quantum physics (Hennecke, 2012). This quantum model has been used in medicine many years ago. In classical medicine, we usually think in a linear way. That means, that one action provokes a reaction (A) that invokes a further reaction (B) and this causes another reaction (C), so one reaction calls all chain of the linear following reactions (Lipton, 2005).

**A → B → C → D → E**

From the perspective of quantum medicine, it is important to realize that if a single organ disorder (A) occurs in an organism, the body will respond to this dysfunction as one unit, and all changes will occur on all organ systems simultaneously [B, C, D, E] (Lipton, 2005) This holistic approach to therapy perceives the patient as one unit (Figure 1).

If there is any pathological change in the liver, the function of gall bladder, heart, spleen, lungs and kidneys could be significantly affected (Figure 2). Any change in the organ system occurs first at the level of energy and later manifest into clinical form, so after blood examination there may not be any clinically evident change recorded (Li-Ling, 2003).

According to quantum physics, matter is actually energy and all substances, including individual parts of the body, viruses, toxins, pollen, bacteria, etc. have their own electromagnetic radiation. Because of their ability of mutual communication, any biological dysfunction can affect entire information flow (Hennecke, 2012). In a healthy organism this intercellular communication runs smoothly, but by

interference of radiation, pathogens, toxin, allergen, etc. could be this intercellular communication disrupted. This disturbed cell communication can cause chronic fatigue, weakness, depression, stress, and consequently organ changes (Zhang et al., 2005). Any dysfunction can be recorded and subsequently corrected by bioresonance (Figure 3.), based on the principle of QP and TCM.

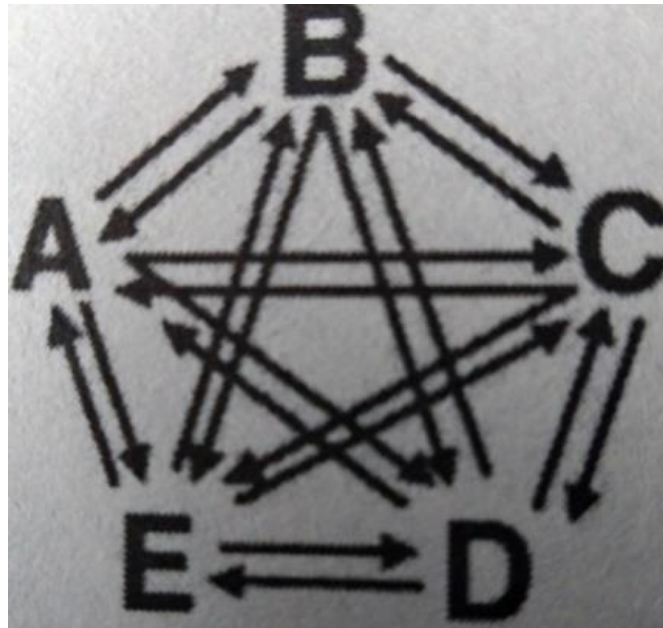


Fig. 1 Quantum model of mutual interaction ( Lipton, 2005- page 109).

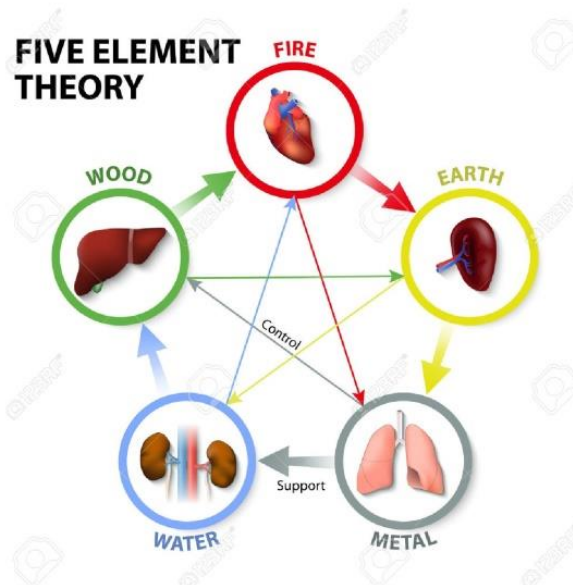


Fig.2 Five elements according to TCM. To each element belongs organs that make couples. Any change in the body can affect this interactions, and can make negative changes in organs. [https://www.123rf.com/photo\\_44252788\\_stock-vector-five-element-theory-oriental-medicine-the-five-element-theory-is-used-in-traditional-chinese-medicine.html](https://www.123rf.com/photo_44252788_stock-vector-five-element-theory-oriental-medicine-the-five-element-theory-is-used-in-traditional-chinese-medicine.html)



**Fig. 3 Bioresonance device with five elements set.**

*Diagnostics and Therapy is composed of several steps:*

1. Bioenergetic testing
2. Pathogen detection
3. Therapy determination

Patient testing is provided through the basic test set (Figure 3.) and specialized sets that are used for more specific diagnostics. The basic test set consists of a set of five elements that, according to TCM, detects energy relationships in the body. Through this set we can determine which organ or organ system has been affected and if disease is acute or chronic. After the diagnostics the process of treatment can be established. Food and air allergens can be tested through the special types of sets designed for the bioresonance device, or can be rated directly from the biological material of the patient (Hennecke, 2012).

There are several scientific studies that confirm the profound effect of electromagnetic spectrum of bioresonance on biological regulatory systems of organism. There are also plenty of case report studies, experiences, documented observational studies, about the positive effect of this biophysical therapy (Shuiming, 2005).

## 2. Homeopathy

Homeopathy is safe and efficacious method of alternative medicine. All principles were

formulated by Samuel Hahnemann between 18th and 19th century, who was supporter of the vitalist tradition. More than 200 years were all effects of the homeopathic remedies studied systematically in the provings. All symptoms, that was during this examination discovered, were noticed in the homeopathic books. These remedies have been prepared from the soluble substances that have their origin in plant, mineral, or animal kingdom. They are non-toxic, and have been produced by special method of potentizing and dynamizing, that makes homeopathics more effective than its original substances. Properly selected remedy can help in the personal integration of the patient that improve the quality of life (Mateo-Sanchez, Torre-Blázquez, 2009).

## CASE PRESENTATION

**Dog „Johny“ – 2, 5 years old, Labrador retriever**

### History

The problems began as acute otitis externa with malodorous exudate, and conjunctivitis with thin, irritant excretion when the dog was 6 months old. This ear and eye condition has been accompanied by pruritus. The state of animal was evaluated as type I of hypersensitivity and animal was treated by his private veterinarian as an allergic patient. Hypoallergenic diet was

recommended. Ears and eyes were treated by combined therapy composed of antibiotics, antifungals and corticosteroids. The animal was getting better but after the initial improvement of inflammatory manifestations in the ears and conjunctiva, the whole process was repeated despite the prescription of antibiotics therapy according to bacteriological results from the laboratory. In addition to otitis externa and conjunctivitis, there was also the skin pruritus located on the whole body, which gradually complicated the clinical condition of Johnny. Another problem has been an erythematous pododermatitis with an intense licking of affected interdigital spaces. The owner tried to follow a hypoallergenic diet according to the instructions of his private veterinarian and at the same time he treated dry and scaly skin with chlorhexidine. Fingers were treated with local therapy containing antibiotics and corticoids. Johnny had a good appetite, but gradually became picky in the feed. Its owner had to alternate several hypoallergenic feed, but always with the same content of rice, lamb, and fish. Despite this therapy, diarrhea was developed, which was

also treated by antibiotics. The owner observed that in addition to licking his fingers, Johnny began to lick his prepuce and increasingly started to eject his penis. However the dog was going for a walk twice daily, the owner has observed urine leakage during the day and night. Later the skin pruritus of the patient became more intensive and diarrhea returned. When Johnny's owner came to University Veterinary Hospital, he asked for another type of therapy – alternative, which could be helpful and without radical side effects for his dog.

### Diagnosics

We did a basic clinical examination of the animal. The tongue was red and dry, the pulse was fast. The skin was dry with pruritus around the ears, eyes, perineum and in the ventral part of the abdomen. The skin in the mouth area was cracked. Hair was dry and matte. The dog had conjunctivitis with an irritant discharge and otitis externa with a malodour exudate (Fig.4). Animal had also walking difficulties, because of pododermatitis with swelling and erythema (Fig. 5).



**Fig.4. Otitis**



**Fig. 5. Interdigital dermatitis**

Although parasitological and bacteriological exams were negative, the presence of *Malassezia* in the auditory canal was confirmed. The owner also confirmed the light anorexia, watery diarrhea, and urine leakage of his dog. Urine cultivation was negative, and there was no

urolithiasis. Hematological and biochemical blood test was also performed (Table 1), where the results have confirmed problems with pancreas (LPS, pAMS), kidneys (CREAT), and anemia (Ery).

**Table 1. The results of the biochemical and haematological examination of the dog before therapy with increased levels of amylase, lipase and creatinine, and presence of anaemia.**

PARAMETER	UNIT	BEFORE THERAPY
ALT	<0,949 $\mu$ kat/l	0,6
ALP	<1,24 $\mu$ kat/l	0,3
LPS	<1,66 $\mu$ kat/l	↑ 2,1
pAMS	< 7,21 $\mu$ kat/l	↑ 10,7
CHOL	3,3-7,4 mmol/l	4,0
UREA	3,97-8,05 mmol/l	7,2
CREAT	46-88 $\mu$ mol/l	↑ 169
K	3,5-5,1 mmol/l	4,42
Ery	5,65-8,87 $\times 10^{12}$ /L	↓ 5,4
Leu	5,05-16,76 $\times 10^9$ /L	11,8

For a better and detailed diagnostics we also used homeopathy and bioresonance. Homeopathic diagnostics is based on the description of the psychological characteristics of the animal by its owner, where owner recounts the character traits of his animal. The owner described Johnny as an individual who is shy and has lack of self-esteem. Johnny felt happy when his owner stayed with him and paid him attention. When the owner left the flat the dog was whining. Johnny liked walks in the fresh air with his owner, and he did not like to play with other dogs. The owner also said that Johnny was usually jumping to his bed during the night to sleep with him and sought for his presence and touch. During the day he used to look for warm places in the flat, to sleep over there. Although he had many toys, he did not play with them.

In bioresonance type of diagnostics we provided a food testing for the dog, which confirmed according to the frequencies, what types of food are suitable for animal. After the test, the diet for animal was changed. All types of food, which had positive resonance with the patient (rice, viscera, bovine heart, pork, eggs, salmon, carrot, zucchini) were used for a diet of the dog.

Then we have also done bioresonance testing of homeopathic remedies and supplements suitable for the patient, which were also confirmed by positive resonance according to positive frequencies between remedy and the dog. Through bioresonance testing and diagnostics we could confirm that animal had many energy blockages and had to be detoxified. After this analysis the treatment could start.

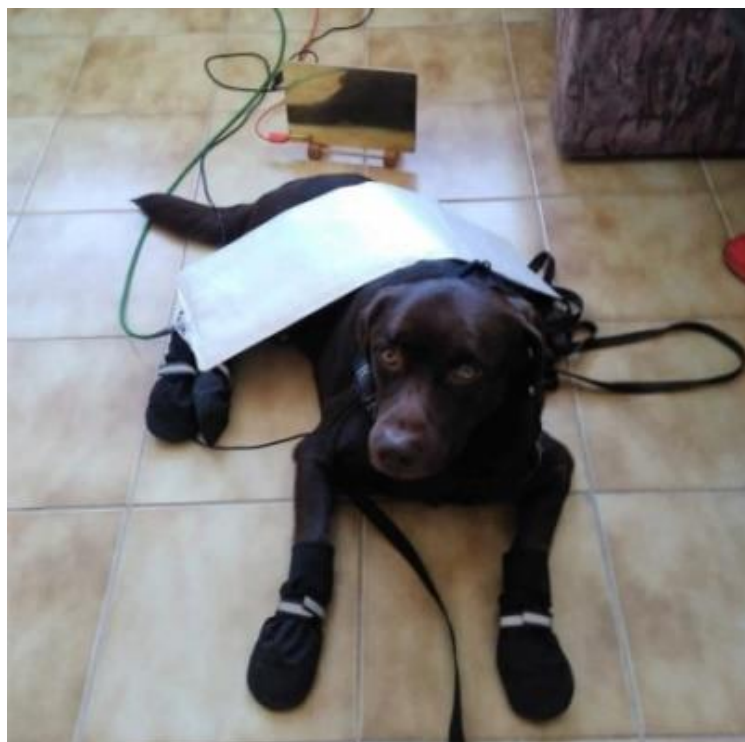
### Treatment

Therapy consisted of the diet where specific types of food were tested. Bioresonance treatment was composed of basic program that modifies the patient's condition according to the classical principle of TCM. Yang excess in the dog, that is very common in allergic patients, was presented, so for treating this energy excess we used the basic bioresonance program which is always used for correction of energetic status of any patient. Later, we continued to eliminate patient's blockages, which caused an incorrect flow of energy in the body and then we started with detoxification programs, including programs to detoxify Liver,

Kidneys and Lymph. The bioresonance therapy was complemented by homeopathy.

Homeopathic therapy has begun with *Pulsatilla* 30CH once daily, that was intended for the treatment of otitis and conjunctivitis, which appeared in the dog as the primary problem. This remedy portray the shyness of the patient, his inclination and the fact that he seeked for a touch of his owner. For *Pulsatilla* is also characterized that the patient likes to move in the fresh air. Homeopathic therapy was complemented by other remedies as *Arsenicum album* 30CH once daily, and *Lycopodium* 30CH three times a day. *Arsenicum album* was indicated because the dog had a dry, scaly skin, watery diarrhea, and a he was looking for some warm places to sleep. For *Arsenicum album* is also characteristic that animal seeks for a

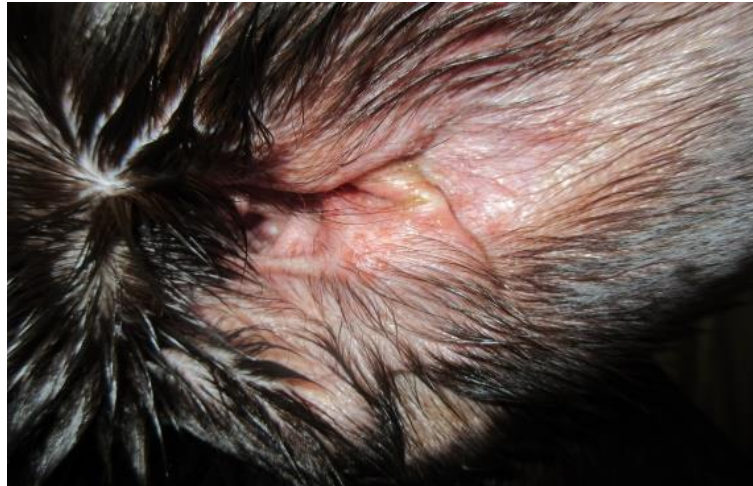
company of his owner, and does not want to stay alone especially at night. The remedy was very suitable also for its problem with urine dripping during the day and night. Other Johny's problems were renal insufficiency and he became picky with his diet. According to this symptoms we decided for another homeopathic remedy *Lycopodium* that is indicated for a dry, scaly skin and matte skin coat, and its typical psychological properties are for example lack of self-esteem. We also tested some natural supplements as immunostimulants (Phytolergan) and omega fatty acids (Normaderm) for the patient. All homeopathic remedies and natural supplements were also confirmed by bioresonance test which demonstrated positive resonance between patient and remedy. Bioresonance therapy was performed every two weeks (Figure 6).



**Fig. 6 Bioresonance therapy of the dog.**

In the following sessions we added antipruritic and special programs that were necessary and suitable for a dog according to its positive resonance with a specific program, and we checked again the effect of natural supplements and homeopathics. After this therapy there was

an enhancement of the dry skin, the dog did not have any scales, there was no more pruritus and urine dripping. Otitis externa was also slightly improved (Figure 7). The problem was still with pododermatitis (Figure 8), conjunctivitis and viscous discharge from the eyes.



**Fig.7 Ear of the dog after 3 weeks of therapy.**



**Fig.8 The dog after 2 months of therapy by bioresonance, homeopathy and natural supplements.**

According to these symptoms we decided to change homeopathic remedy *Pulsatilla* 30CH and we used *Graphites* 30CH twice daily. *Graphites* 30CH has helped to treat recurrent otitis accompanied with malodour exudate and also conjunctivitis. Significant effect of this remedy showed up in the therapy of pododermatitis with erythema and oedema of the skin. The dog stopped licking its fingers, prepuce and to eject its penis.

Whole therapy of the patient took four months, where the pruritus, dry skin, gastrointestinal and urogenital problems were totally treated. Allergic manifestations on the eyes, ears (Figure 9) and toes have been resolved. After 4 months of therapy was condition of the patient completely stabilised.

Pruritus, diarrhea and gastrointestinal problems were eliminated, the level of amylase, lipase and creatinine were corrected and the level of



erythrocytes was improved (Table 2), otitis was treated and hair started to grow.

## DISCUSSION

There are many cases of food allergy in dogs, that might be caused by allergic reaction to a certain component of food, or may be a result of the reaction to an additive or toxic substance presented in the food (Roudebush, 2013; Mueller et al., 2016). Typical food allergy

symptoms are pruritus and skin alterations, which can be also accompanied by symptoms of the gastrointestinal system (Steiner, 2008). Our patient Johny also belonged to this "classical" group of allergic dogs with primary dermatological symptoms and later with symptoms of gastrointestinal system. We decided for a combined type of therapy composed of bioresonance and homeopathy.



Fig.9 Ear of the dog after treatment.

Table 2. The results of the biochemical and haematological examination of the dog after therapy, where levels of amylase, lipase and creatinine were adjusted and erythrocytes level was improved.

PARAMETER	UNIT	AFTER THERAPY
ALT	<0,949 $\mu$ kat/l	0,5
ALP	<1,24 $\mu$ kat/l	0,72
LPS	<1,66 $\mu$ kat/l	0,4
pAMS	< 7,21 $\mu$ kat/l	7,1
CHOL	3,3-7,4 mmol/l	4,0
UREA	3,97-8,05 mmol/l	3,13
CREAT	46-88 $\mu$ mol/l	82,4
K	3,5-5,1 mmol/l	4,42
Ery	5,65-8,87 $\times 10^{12}$ /L	7,2
Leu	5,05-16,76 $\times 10^9$ /L	10,5

The first step of the treatment in case of food allergy is usually an elimination of inappropriate food and suitable diet for a dog, which would be helpful in his diagnosis. The basic diagnostic procedure consists of food determination and appropriate choice of elimination diet, in which it is necessary to know its proper composition. (Luckschander et al., 2006; Rostaher et al., 2017). In case of Biologically Appropriate Raw Food (BARF), diet should be balanced sufficiently and mixed with fresh and safe ingredients (Wagner, 2014). Food that could be adequate for an individual, can be tested safely with bioresonance (Hennecke, 2012). According to a series of studies performed in patients with allergy and pruritus, approximately 63% of allergic patients were completely cured with bioresonance therapy, 20,5% of patients experienced a significant improvement after treatment, 10,2% of patients improved slightly and 3% of patients did not feel any change after treatment. In addition to the bioresonance therapy, which in most cases improves condition of allergic patients (Brügemann, 2006), it is also important to eliminate the pathogenic factor (Schoen, 2001). According to TCM, pruritus has been a concomitant symptom of allergic manifestation, linked to the liver. It means that the liver must be detoxified (Xie et al., 1994). The process of detoxification can be done directly through bioresonance, or by using natural supplements, or their combinations that provide detoxification.

The main goal of homeopathic therapy was to cover the full range of the patient's symptoms by using homeopathic remedies that have these symptoms in their picture. A large number of homeopathic remedies can be used to treat allergic patients with skin pruritus, inflammation of the ears, eyes, fingers and digestive disorders with diarrhea (Hamilton, 2014; Hunter, 2004; Macleod, 1983). However, it is important to select homeopathic remedies that in addition to physical symptoms also reflect the psychological characteristics of the patient. In the case of Johny, we were looking for an appropriate

remedy for a dog that has lack of self-confidence that is shy, insecure, and likes the owner's touch. At the beginning of the therapy we decided to use *Pulsatilla* 30CH, because in addition to the psychological symptoms listed above, has an excellent effect for recurrent otitis and conjunctivitis (Gregory, 2013; Sankaran, 2000). These symptoms occur very often in allergic patients, and are accompanied with variable types of discharge, what is typical for *Pulsatilla*. However, this remedy is also characterized by insults, tears, compliance and jealousy, *Pulsatilla* likes the touch of its owner, but at the same time needs to be comforting and constantly assuring that has been the center of his attention (Yakir, 2017). Because of there were not the last mentioned characteristic features in our patient, we found out, that *Pulsatilla* could cover some part of its physical symptoms but not all of them.

One of the excellent medicaments for allergic manifestations in dogs has been also *Arsenicum album*. Many authors (Mathison, 2017; Scholten, 2008; Sankaran, 2000) describe its usefulness in the treatment of dry, scaly, allergic skin with pruritus, and with the occurrence of watery diarrhea. This remedy was also applied for the therapy of renal failure, which has been diagnosed in the patient because of its increased level of creatinine and urine dripping. Similarly, *Arsenicum album* has been helpful for the treatment of anemia that has been recorded by haematological examination. Uncertainty, anxiety, and fear are the features that dominate the mental image of this remedy. Very important feature is also fastidiousness. Dog always looks neat and tidy and he avoids dirt and mud (Gregory, 2013). This symptom did not have Johny and his owner has told to us many stories as his dog learnt to play with toys, which he regularly tore and he was also making a mess at home. One of a typical symptom for *Arsenicum album* is coldness even in young individuals, which increases with age (Scholten, 2008). Although our patient used to lie in common warm places at home, he liked walking in the fresh air.

The owner described the fact that Johnny used to jump at night to his bed. He explained that he was seeking for his presence because he didn't want to stay alone. In the mentally image, the *Arsenic* has been presented by the fear of an individual, if he stay alone. Even the dog likes play with other dogs, Johnny wasn't looking for contacts with other dogs and he used to stay alone in the apartment during the day. Because of *Arsenicum album* did not reflect the full range of mentally symptoms and generals for this patient, we complemented this therapy with *Lycopodium*.

*Lycopodium* is excellent for the treatment of allergic patients, who have scales and dryness of the skin, pruritus associated with conjunctivitis. It has been also very beneficial remedy for renal failure and digestion problems. *Lycopodium* has a deserved reputation as a liver remedy. There is an excess of gas, so the patient suffers from bloating. As a result, the patient often feel full after eating only a small quantity and hence will leave their meal unfinished returning later for more (Mathison, 2017; Sankaran, 2000). In our case, Johnny became picky in its hypoallergenic feed, but after the change of diet, he started to eat large quantities of the food. His difficulties were manifested by elevated levels of pancreatic parameters. Diarrhea was not light anymore, but it has been brown and still watery. For *Lycopodium* is characterized that animal has been extremely skinny but Johnny was not. Its typical psychological symptoms are lack of self-confidence, shyness and subservience. They may cover up their fear, or seek protection of the owner. He has many fears, but most of all he is afraid of himself and his safety (Gregory, 2013). We were also convinced that this remedy could help the patient with his physical symptoms, but not at the psychological level. We could confirm that this remedy does not sufficiently describe character traits of our patient.

Because of the persistent pododermatitis, conjunctivitis and detailed analysis of the character traits of the dog, we decided to use another homeopathic remedy *Graphites* instead

of *Pulsatilla*. Several homeopathic textbooks describe (Mathison, 2017; Sankaran, 2000; Vithoulkas, 2008) that the most common physical indication for *Graphites* is the skin, which is unhealthy and prone to infections such as moist dermatitis and furunculosis. Skin lesions of *Graphites* patient exude a characteristic sticky, honey-colored discharge mainly in the skin folds, in the ears or behind the ears. There is usually pruritus and animals use to scrape their face. There is a similar reaction to the perianal itching, which is a feature of this remedy state. Affected animals licking the perineum and all around the tail root. There is tendency to the formation of the cracks on the scalp and around the eyes, and there is also presented conjunctivitis with the sticky discharges. Skin lesions may be observed also in the interdigital spaces as pododermatitis (Gregory, 2013). All mentioned symptoms were consistent with the clinical symptoms of our patient. *Graphites* remedy is indicated in case of gastrointestinal diseases, where constipation with shiny black stool, or black diarrhea may be developed (Mathison, 2017). *Graphites* is suitable also for therapy of urogenital system. High libido is also one of the symptoms that can occur in the clinical picture of this remedy and males have propensity to eject their penis. All these symptoms of *Graphites* remedy have been consistent with a clinical signs of our patient. Typical characteristic features of *Graphites* are lack of self-confidence, anxiety, shyness, even male dogs may be frightened of smaller ones. They may also to show disinterest in other animals and may show no desire to engage with any other being, of any species (Gregory, 2013). The same behaviour have had also Johnny. In many situations we have noticed, that his key problem at the psychological level is lack of self-esteem, hesitation and stubbornness. In the waiting room, he behaved as a timid dog, seeking no contact with other patients. He reacted slowly and uncertainly in the new places. Johnny was not as intelligent as the owner described him. It took him much more time to learn something, but he learnt things steadily. All

symptoms mentioned above are well consistent with the psychical characteristic of *Graphites* remedy. While studying the clinical picture of this remedy, it should be realized that the base of *Graphites* has been carbon. In the periodic table, carbon occupies a position on row 2, hence the sense of individuality and self is poorly developed. On the other hand its position in column 10 represents stability. So the carbon remedies are generally stable characters, but they have issues around self-worth, which lead to lack of self-confidence (Scholten, 2008). Johnny was also a brown Labrador Retriever who used to like to eat and was prone to obesity. All his symptoms were completely consistent with the picture of *Graphites* remedy. Our patient liked to lie in warm places, but at the same time he liked walking in the fresh, sometimes even cold air, which is also typical for *Graphites*. This type of patient is generally chilly, but they may also exhibit the same pattern as *Pulsatilla*, seeking heat in the winter, but preferring cool in the summer (Sankaran, 2000). This is especially true for *Graphites* patients who are young and have more energy. At this stage of their life, they have many symptoms similar to *Pulsatilla* (Gregory, 2013) Also Vithoukas (1990) describes the essence of *Graphites* as „bland“ and this is an apt for personality of the animal patient, who may often appear dull and sluggish, but in the young age *Graphites* can also remind *Pulsatilla*. Therefore, we used *Pulsatilla* at first (Gregory, 2013).

Beta glucans belong to prominent immunomodulators and activators of white blood cells, especially macrophages, which are able to significantly accelerate the healing process of the organism (Bohn and BeMiller, 1995). In addition to the immuno-stimulatory effect, they have also anti-infective and anti-mycotic activity and increase the body's resistance (Jantova et al., 2015; Stier et al., 2014). Its practical use generally increases activity, alleviating clinical signs of disease, reducing the process of healing and secondary infections, improving efficacy of causal therapy and prognosis of healing. Beta

glucan has also an adjuvant effect in enhancing the effectiveness of therapy with other drugs such as antibiotics and natural supplements (Haladova et al., 2011). It has also been safe and non-toxic for animals (Vannucci, et al., 2013). According to this positive effects, we also have been applying beta glucan as a complementary treatment for our patient.

We present this case report as an example of combination therapy using bioresonance, homeopathy and natural products to aim the treatment. Our main goal was to harmonize and support the patient's own regenerative abilities.

## CONCLUSION

Bioresonance is one of the diagnostics and treatment methods of regulatory medicine. Through the combination of QP and TCM is able to regulate Qi energy flow, detoxify a patient and modify all cells, tissues and organ imbalances that provide a non-invasive therapeutic effect for patients. Through the frequencies is able to test an appropriate types of food, nutritional supplements and remedies for each patient individually, identify allergens, toxins, pathogens and exclude them from the body. In combination with other alternative therapies such as homeopathy, acupuncture, phytotherapy it is very beneficial type of complementary treatment in human and veterinary medicine.

## References

1. BOHN J.A., BEMILLER J.N. (1→3)-b-D-Glucans as biological response modifiers: A review of structure-functional activity relationships. *Carbohydr. Polym.* 28 :3–14, 1995. DOI: 10.1016/0144-8617(95)00076-3.
2. BRÜGEMANN H. Are there evidence-based studies on the efficacy of the bioresonance method? *REGUMED Institut für Regulative Medizin*, 82166 Gräfelfing, RTI Volume 30, 55-66, 2006.
3. GREGORY P. *Insights into Veterinary Homeopathy*, Published by Saltire Books Ltd, ISBN 978-1-908127-0-68, 183, 251, 259, 2013.
4. HALADOVÁ E. et al., Immunomodulatory effect of glucan on specific and nonspecific immunity after vaccination in puppies. *Acta Vet Hung*, 59 (1): 77-86, 2011. DOI: 10.1556/AVet.59.2011.1.7.

5. HAMILTON D. Homeopatická léčba psu a koček, Nakladatelství Alternativa, 2008, 113-125, 155-176, ISBN 978-80-86936-10-9, dotisk 2014.
6. HENNECKE J. Energetic Allergy Therapy – Possibilities and Experiences with Bicom Bioresonance Therapy; Medical Journal of Naturopathy 35, 427-432, 1994.
7. HENNECKE J. Bioresonance: a new view of medicine. Books On Demand. ISBN-13: 978-3844823752, 2012.
8. HUNTER F. Everyday homeopathy for animals, Beaconsfield publishers Ltd., UK, ISBN 0-906584-54-X, 70,72,77,90,95, 2004.
9. JANTOVA S. et al., Biological properties of a novel coladern-beta glucan membrane. In vitro assessment using human fibroblasts. Biomedical Papers of Medical Faculty of the University Palacky Olomouc. 159 :67–76, 2015. DOI: 10.5507/bp.2012.115.
10. LI-LING J. The Jing-Mai connections of the heart. International Journal of Cardiology 89(1), 1-11,2003. DOI: [https://doi.org/10.1016/S0167-5273\(02\)00426-6](https://doi.org/10.1016/S0167-5273(02)00426-6).
11. LIPTON B.: Biológia presvedčenia. Slovenské vydanie, Eugenika Pbl. ISBN- 9788081002861, 105-111, 2011.
12. LUCKSCHANDER N., ALLENSPACH K., HALL J. et al. Perinuclear antineutrophilic cytoplasmic antibody and response to treatment in diarrheic dogs with food responsive disease or inflammatory bowel disease. Journal of Veterinary Internal Medicine 20, 221-227, 2006. <https://doi.org/10.1111/j.1939-1676.2006.tb02849.x>
13. MACLEOD G., Homeopatic remedies, first edition, C.W. Daniel Company limited, Saffron Walden Essex, ISBN 0-85207-207-4, 1-27, 87-107, 1983.
14. MATHISON V. Homeopathic Remedy Pictures for Animals, Narayana Publishers, ISBN 978-3-943309-03-04, 2-nd English Edition, 69, 85, 107, 2017.
15. MATEO-SANCHEZ C., TORRE-BLAZQUEZ J. R. Homeopatia Veterinaria: Materia médica casos clinicos y comentarios [2nd ed] ISBN- 9788498271386, 11-25,75-85, 189-205, 2009.
16. MUELLER R.S., JACKSON, H. Atopic dermatitis and food adverse reaction. In: Foster, A.P, Foil, C.S. (Eds). Manual of Small Animal Dermatology, 2nd Edn. British Small Animal Veterinary Association, Gloucester, England, UK, 125-136, 2003.
17. MUELLER R.S., OLIVRY T., PRELAUD P. Critically appraised topic on adverse food reactions of companion animals (2). Common food allergen sources in dogs and cats. BioMed Central Veterinary Research 9-12, 2016. DOI:10.1186/s12917-016-0633-8.
18. MUELLER R.S., UNTERER S. Adverse food reactions: Pathogenesis, clinical signs, diagnosis and alternatives to elimination diets. The veterinary journal. ISSN- 10900233, vol. 236, 85-89, 2018. DOI:10.1016/j.tvjl.2018.04.014
19. PICCO F., ZINI E., NETT C. et al. A prospective study on canine atopic dermatitis and food-induced allergic dermatitis in Switzerland. Veterinary Dermatology 19, 150-155, 2008. DOI: 10.1111/j.1365-3164.2008.00669.x
20. ROSTAHER A., HOFER-INTEEWORN N., KUMMERLE-FRAUNE C. et al. Triggers, risk factors and clinico-pathological features of urticaria in dogs – a prospective observational study of 24 cases. Veterinary Dermatology 28, 38-39, 2017. DOI:10.1111/vde.12342
21. ROUDEBUSH P. Ingredients and foods associated with adverse reactions in dogs and cats. Veterinary Dermatology 24, 293-294, 2013. DOI:10.1111/vde.12014
22. SANKARAN R. Materia medica- Duše homeopatických léku, Nakladatelství Alternativa, Praha, prvé vydání, ISBN- 80-85993-54-6, 43-46, 141-144, 184-190, 256-259, 2000.
23. SCHOEN A. M. Veterinary acupuncture: Ancient art to modern medicine [2nd ed] Elsevier - Health Sciences Division. ISBN-13 9780323009454, 283, 2001.
24. SCHOLTEN J. Homeopatia a prvky, prvé vydanie, Slovak Edition Modrý Peter, ISBN- 978-80-85515-80-0, 155-162, 515-519, 2008.
25. SHUIMING H., SUN Z., FANG Y. Clinical observation of the treatment of allergies and bronchial asthma in children with the bioresonance therapy device. Zhejiang Medical Journal (official translation), Edition 6, Volume 27,2005.
26. STEINER J. M. Small Animal Gastroenterology. Hannover: Schlütersche Verlagsgesellschaft, ISBN- 9783899930276, 253, 2008.
27. STIER H., EBBESKOTTE V., GRUENWALD J., Immune-modulatory effects of dietary Yeast Beta-1,3/1,6-D-glucan. Nutr. J. 13:1–9, 2014. DOI:10.1186/1475-2891-13-38
28. VANNUCCI L. et. al., Immunostimulatory properties and antitumor activities of glucans. International journal of oncology. Vol 43. Issue 2. 357-364, 2013. <https://doi.org/10.3892/ijo.2013.1974>
29. VITHOULKAS, G. The Essence of Materia Medica. New Delhi: B.Jain; 74, 1990

30. WAGNER C. <http://hawthornevet.com/wp-content/uploads/2014/09/Food-Therapy-Lecture1.pdf>, 2014.
31. XIE H. et al. Traditional Chinese Veterinary Medicine. Beijing Agricultural University Press, Beijing, China , ISBN- 13: 9787810026260, 1994.
32. ZHANG X., WANG W., LIU Q. Clinical observation of 54 cases treated for nettle rash using the BICOM bioresonance therapy device. China Scientific and Technical Journal, China Academic Journal (official translation), Volume 21, No. 8, 2005.
33. YAKIR M. Wondrous Order, Systematic table of homeopathic plant remedies, Book one: flowering plants, Publisher Naranaya verlag GmbH. Kandern, Germany, ISBN-978-3-95582-109-8, 156, 2017.

